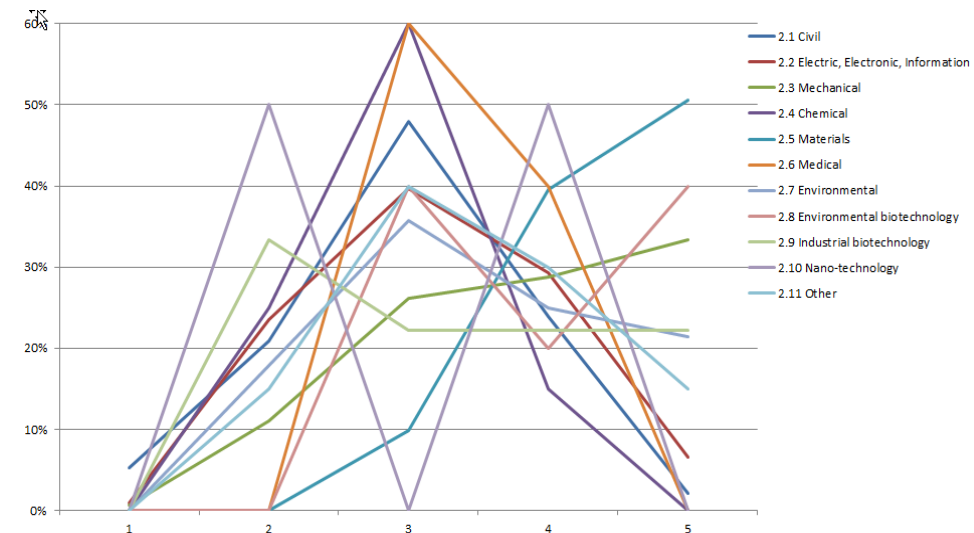
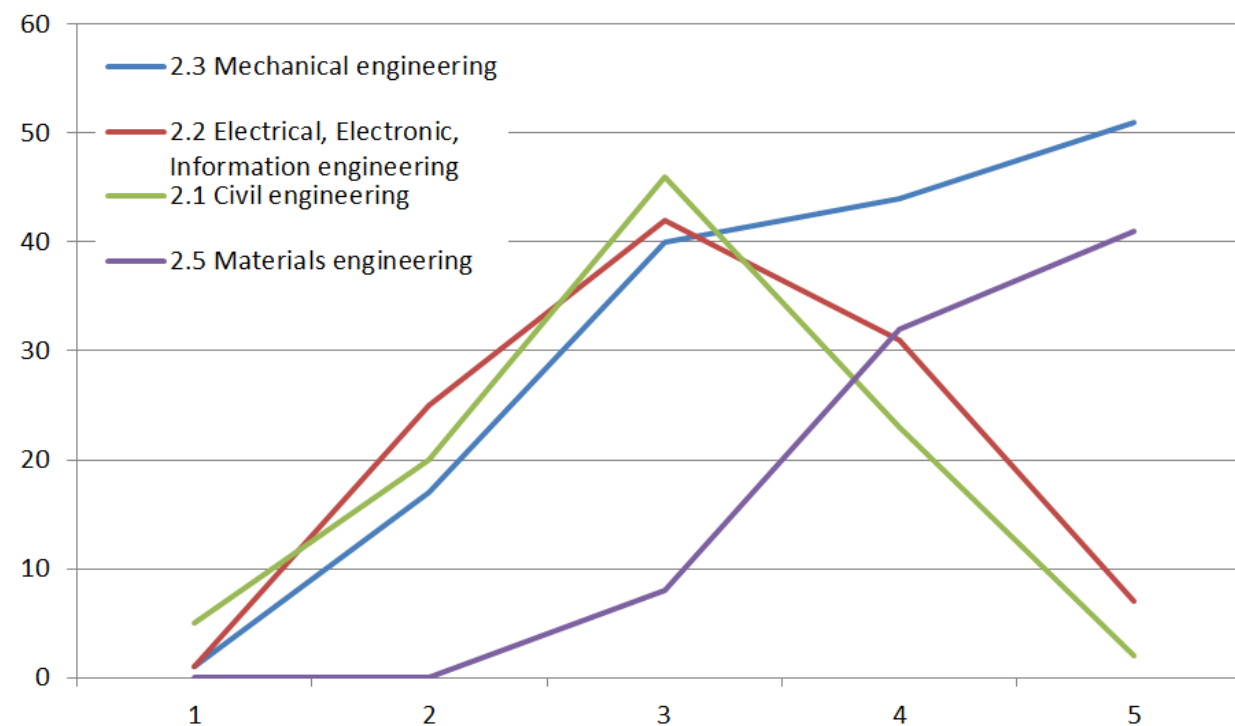


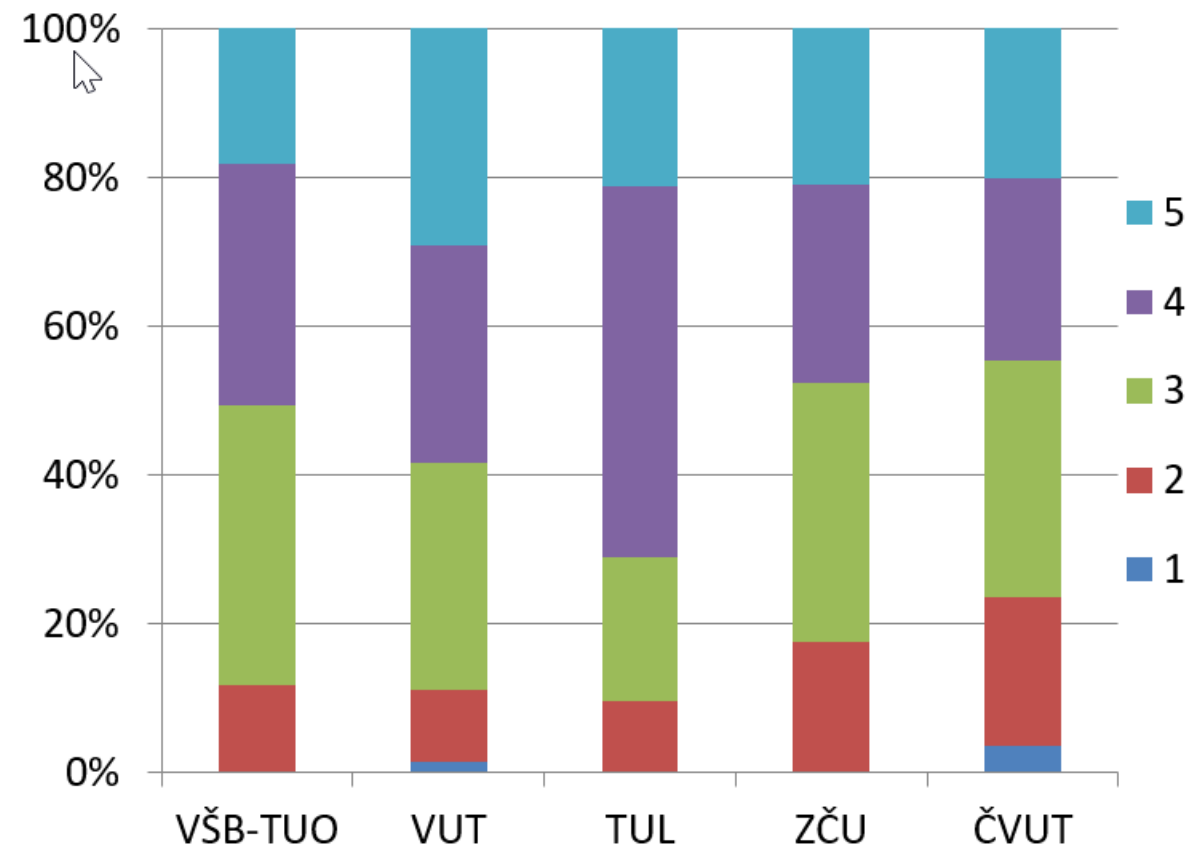
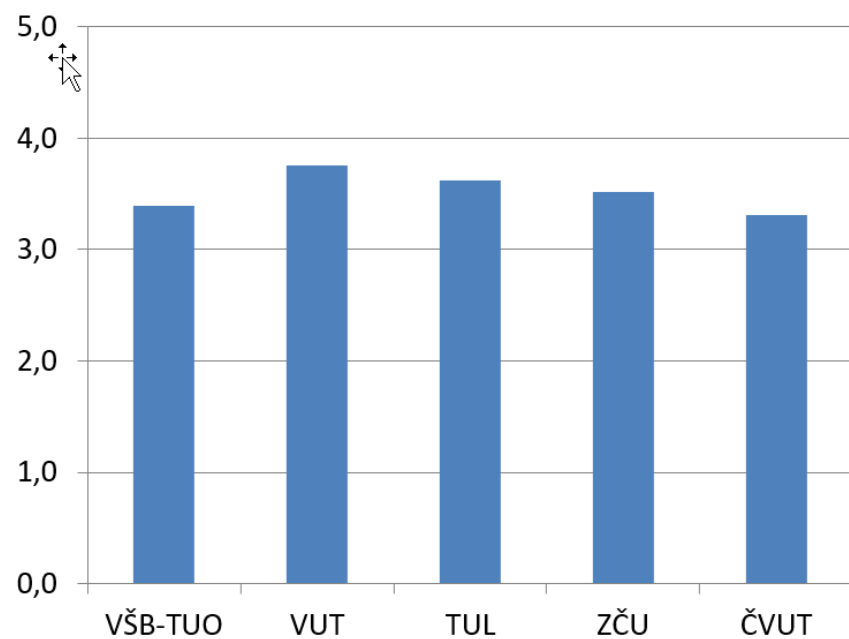
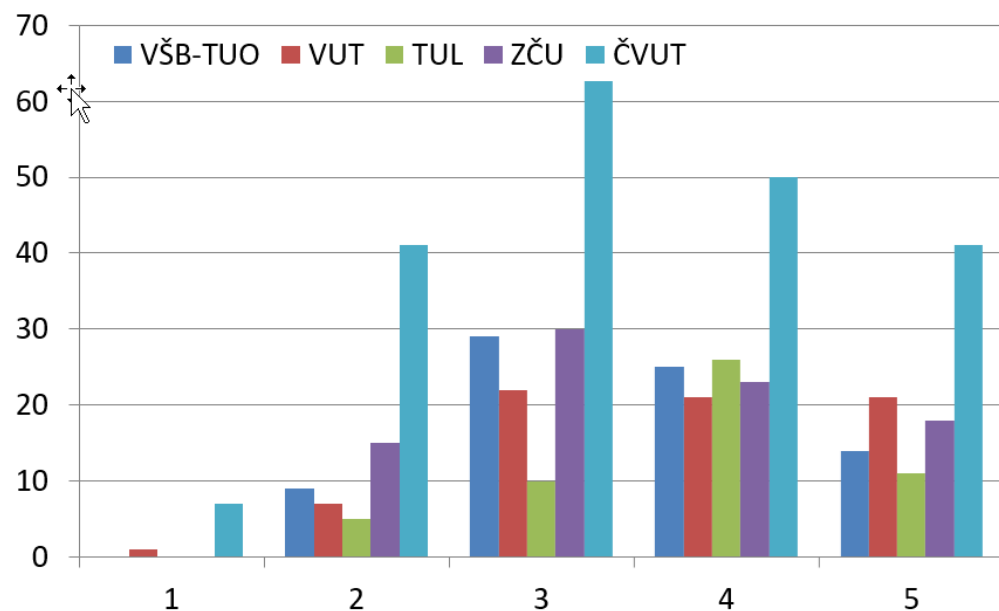
Obor	průměr	%1	%2	%3	%4	%5	počet
2.4 Chemical engineering	2,90	0%	25%	60%	15%	0%	22
2.1 Civil engineering	2,97	5%	21%	48%	24%	2%	96
2.10 Nano-technology	3,00	0%	50%	0%	50%	0%	9
2.2 Electrical, Electronic, Information enginee	3,17	1%	24%	40%	29%	7%	106
2.9 Industrial biotechnology	3,33	0%	33%	22%	22%	22%	9
2.6 Medical engineering	3,40	0%	0%	60%	40%	0%	5
2.11 Other engineering and technologies	3,45	0%	15%	40%	30%	15%	20
2.7 Environmental engineering	3,50	0%	18%	36%	25%	21%	28
2.3 Mechanical engineering	3,83	1%	11%	26%	29%	33%	153
2.8 Environmental biotechnology	4,00	0%	0%	40%	20%	40%	5
2.5 Materials engineering	4,41	0%	0%	10%	40%	51%	81
<b>2. Engineering and Technology</b>	<b>3,55</b>	<b>2%</b>	<b>15%</b>	<b>34%</b>	<b>30%</b>	<b>23%</b>	<b>534</b>

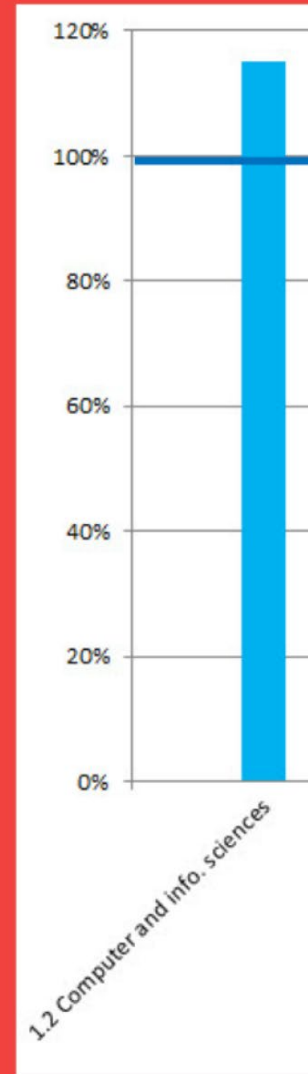
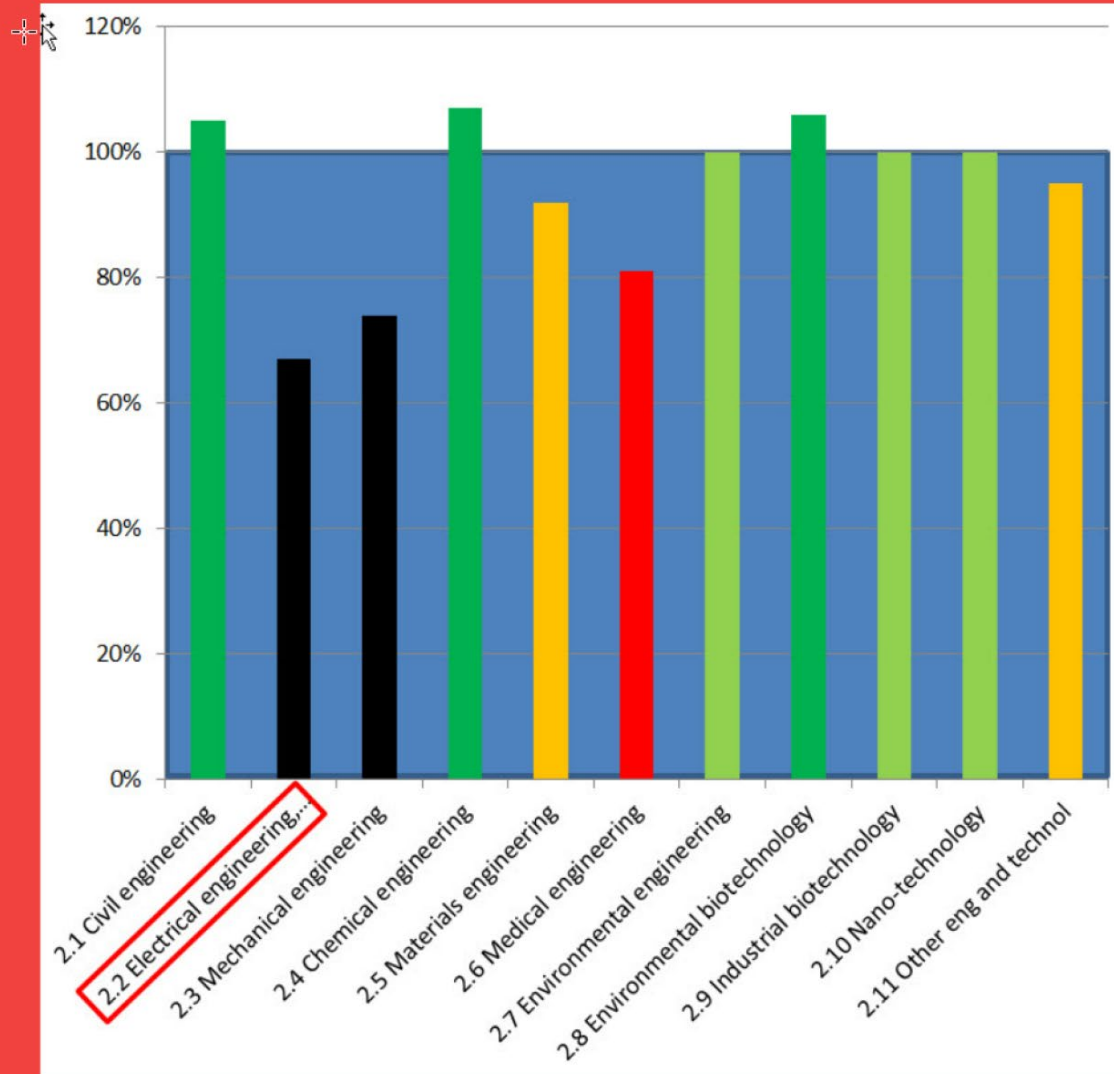


M1-EaT  
podle  
FORD



# M1-EaT podle TU





M2-EaT  
podle  
FORD

